

THE IDIOSYNCRASIES OF YOUR NEW MINI.

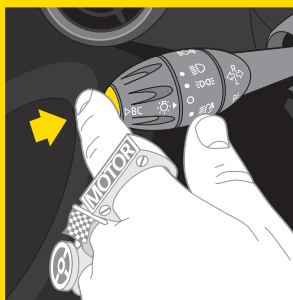


GET READY TO START YOUR ENGINE.

To start your car, insert the key fob in the slot, put your foot on the clutch (if you have a manual transmission) or the brake (if you have an automatic). Just like you would turn the key in other cars, give the start/stop button a single push and the engine will turn over. You're now ready and set to motor. If you hit the start/stop button once with the key fob in the slot but without your foot on either pedal, you can customize your preferences. See There's No Such Thing As "Too You" for more details.

THERE'S NO SUCH THING AS "TOO YOU."

With 150 trillion possible MINI configurations, it's unlikely you'll meet your clone. Set your personal profile and further up the odds. Begin setting any preference by putting the key fob in the dash and hitting the start/stop button once without your foot on the clutch or brake (so the car won't start). This activates radio readiness. You can now customize features such as how many times the turn-signal indicator flashes in lane-changing maneuvers, daytime-running lights, pathway lighting and the way your car unlocks. Consult your owner's manual for greater detail.

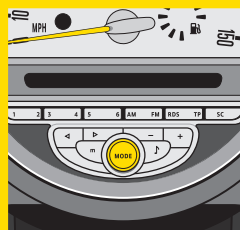


VOLUME CONTROL.

You'll find the knob that controls the stereo's decibel levels slightly below the CD player, rather than in the radio face itself. You may choose to share this very important information at your discretion.

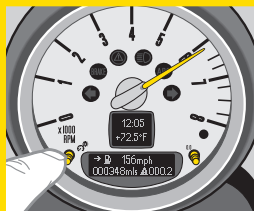
THE OTHER KNOB.

Now that you've located the volume-control knob, you may be curious about the other knob located on your car's radio face. Turn this knob to easily change your radio presets without having to hit the preset buttons themselves. You can also use this knob to access the on-board computer readouts. Hit the menu button and select "BC" to rotate through them easily.



ICY WARNING.

When the temperature drops to 37 degrees Fahrenheit, the temperature reading flashes "37" and a tone sounds. This is simply a warning that the roads might become slick or icy since the weather is near freezing. Be careful.

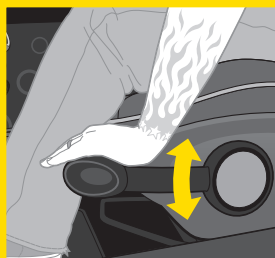
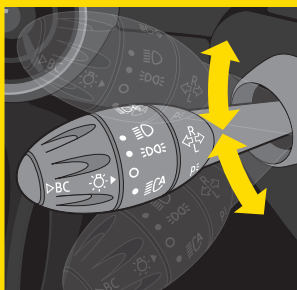


TACHOMETER CONTROL.

You'll notice two adjustment buttons on your tachometer: one that controls the dashboard lights and another that resets the trip odometer. Press and hold the luminosity knob to brighten the dashboard lights. Press and release repeatedly to dim the dash lights to suit your mood. Tap the other knob and the trip odometer resets.

TAKING YOUR TURN.

You'll want to take turns often in a MINI, so getting acquainted with your signaling equipment is a must. Flip the turn-signal stalk past the point of resistance to indicate a left or right turn. The signal stalk immediately goes back to its starting position; however, the signal light continues to blink through the entire turn. For lane-changing maneuvers, push the turn-signal stalk to the point of resistance and the signal will blink briefly. Your windshield wipers work in a similar way. See the owner's manual for details.

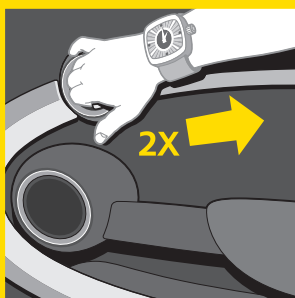


SEAT HEIGHT ADJUSTMENT.

Adjust the seat height by pumping the lever up and down like a ratchet. Be sure not to use this lever when trying to slide the seat forward. There's a separate bar for that, located under the front of the seat. For a better understanding, see the owner's manual.

YOUR SEAT HAS A MEMORY.

Pull the release lever found on the upper-rear backrest and the entire front seat moves forward. To return the front seat back to its original position, simply slide it back on its track first, and then push the top of the seat back. Once you master the technique, it will work wonders to keep your seat just the way you want it.



GETTING OUT.

It has to happen eventually, even to the most dedicated of motoring MINI Owners. You can unlock your door by flipping the toggle switch, which opens both doors and the tailgate. Or you can just pull twice on the door handle. The first pull unlocks the door. The second pull opens the door. And if you don't want to do any double pulling, you can program your locking system to your own specification. See *There's No Such Thing As "Too You"* for more details.