

THE IDIOSYNCRASIES OF YOUR NEW MINI CONVERTIBLE.

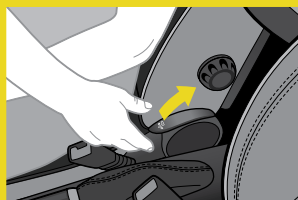
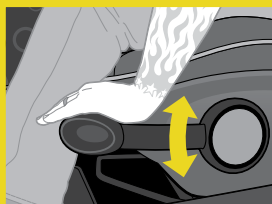


GET READY TO START YOUR ENGINE.

To start your car, insert the key fob in the slot and put your foot on the clutch (if you have a manual transmission) or the brake (if you have an automatic). Just like you would turn the key in other cars, give the start/stop button a single push and the engine will turn over. You're now ready and set to motor.

SEAT HEIGHT ADJUSTMENT.

Adjust the seat height by pumping the lever up or down like a ratchet. Be sure not to use this lever when trying to slide the seat forward. There's a separate bar for that, located under the front of the seat.

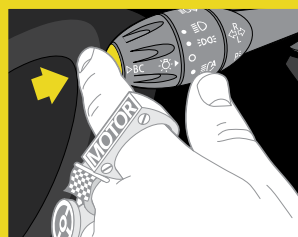


SEATBACK ADJUSTMENT.

Adjusting your seatback is easy. You just need to know where to look. Simply lift up the center arm rest, if your car is so equipped, and then lift the lever on the inboard side. This lever will unlock your seatback, allowing you to recline or sit up as you wish. Releasing the lever will lock it back into place.

YOUR SEAT HAS A MEMORY.

Pull the release lever found on the upper-rear back rest, and the entire front seat moves forward. To return the front seatback to its original position, simply slide it back on its track first, and then push the top of the seatback until it locks in place. Once you master the technique, it will work wonders to keep your seat just the way you want it.

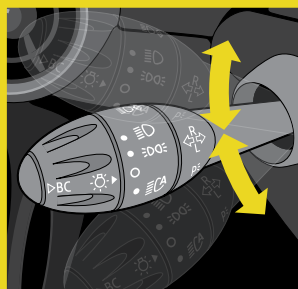
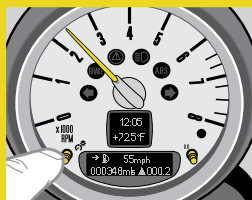


THERE'S NO SUCH THING AS "TOO YOU."

With over 150 trillion possible MINI configurations, it's unlikely you'll meet your clone. Set your personal profile and increase the odds. Begin setting any preference by putting the key fob in the dash and hitting the start/stop button once without your foot on the clutch or brake (so the car won't start). This activates radio readiness. You can now customize features such as how many times the turn-signal indicator flashes in lane-changing maneuvers, daytime-running lights, pathway lighting and the way your car locks. Consult your Owner's Manual for more details.

TACHOMETER CONTROL.

You'll notice two adjustment buttons on your tachometer: one that controls the dashboard lights and another that resets the trip odometer. Press and hold the luminosity knob to brighten the dashboard lights. Press and release repeatedly to dim the dash lights to suit your mood. Tap the other knob and the trip odometer resets.



TAKING YOUR TURN.

You'll want to take turns often in a MINI, so getting acquainted with your signaling equipment is a must. For lane-changing maneuvers, push down or lift up the turn-signal stalk to the point of resistance and the signal will blink briefly. Flip the turn-signal stalk past the point of resistance to indicate a left or right turn. The signal stalk immediately goes back to its starting position; however, the signal light continues to blink through the entire turn. To interrupt the continued blinking, just push the turn-signal stalk in the same direction until the point of resistance. Your windshield wipers work in a similar way. See the Owner's Manual for details.

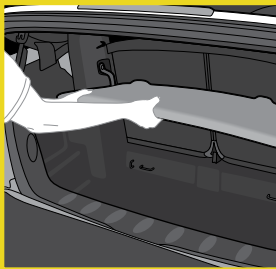
CONVERTIBLE TOP OPERATION.

Let's say you want to open things up a bit. That's easy enough. Just find the convertible top toggle switch located in the overhead console. Pull it back for three seconds and the sunroof slides open. Pull it back for another 12 seconds and the whole top comes down. If your top doesn't come down, three things probably need to happen. First, the rear parcel shelf must be in the lower position. Second, the Easy-Load feature latches must be locked. And third, the boot must be closed. Of course, the easiest and most fun way to combat this problem is to be Always Open. For more information regarding the rear parcel shelf and Easy-Load feature, see the next two items.



REAR PARCEL SHELF.

Putting the shelf in the up position gives you more trunk space to help you load more cargo. Simply lift it up, pull toward you and pivot it into the up position. However, you should also know that the convertible top won't go down if the parcel shelf is in the up position. So if you're trying to put the top down and you see the little green light next to the switch blink, make sure the parcel shelf is down and locked. To move it to the down position, lift it upwards, pull it toward you, swing the shelf down to the lower position and set it into place by pushing down.



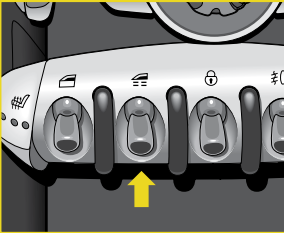
EASY-LOAD FEATURE.

Thanks to the ultra-convenient Easy-Load feature, your MINI Convertible can magically fit large objects into its boot. Just expand the cargo area's opening height, load in that new roll of shag carpeting you just picked up and then lock the two latches in place to secure the opening. Keep in mind, though, that the soft top has latch anxiety, and if the latches are not in the locked position, the top won't lower.



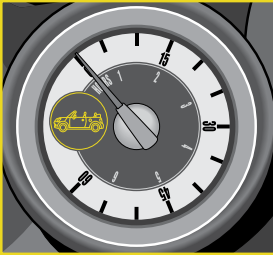
THE OMNI-WINDOW CONTROL SWITCH.

As the pilot of your MINI Convertible, you are window master and commander. To control all four windows simultaneously, locate the switch to the right of the left-window switch. Flip the switch down quickly and release, and all four windows will lower automatically. This is called the Express Function. If you hold down the switch without releasing, the windows will retract as long as you hold it down (1st the front, then the rear). If you let go, the windows will stay where they are. Pulling the switch up will likewise bring them all up (1st the rear, then the front). You are now ready to rule the windows with an iron thumb, or forefinger. Of course, that doesn't mean you should.



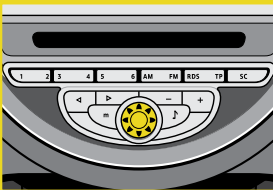
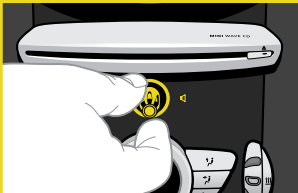
THE OPENOMETER.

Much like a speedometer, which measures speed, the Openometer measures the amount of time you've had the top down and your MINI open. Makes sense, right? We thought so, too. It'll count up to seven hours at a time, then reset to zero while the "eternal timer" in the trip computer tracks total hours. Your Openometer is located on the left side of the tachometer. So take that top down and start counting the minutes and hours in the name of Open Motoring. (By the way, having the sunroof open doesn't count — the top has to be completely open and the engine must be turned on for the Openometer to calculate your time.)



VOLUME CONTROL.

You'll find the knob that controls the stereo's decibel levels slightly below the CD player, rather than in the radio face itself. You may choose to share this very important information at your discretion.

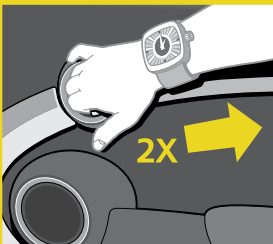
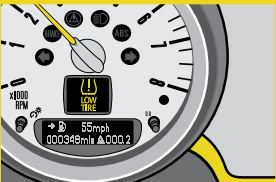


THE OTHER KNOB.

Now that you've located the volume-control knob, you may be curious about the other knob located on your car's radio face. Turn this knob to easily change your radio presets without having to hit the preset buttons themselves. You can also use this knob to access the on-board computer readouts. Hit the menu button and select "BC" to rotate through them easily.

TIRE PRESSURE MONITOR (TPM).

If the pressure in your tires happens to get low, the tire pressure monitor will turn on, telling you so. Just bring the car to a stop, make sure your tires are OK and refill as necessary. No biggie. For further details on the TPM functions, check out the demonstration video on ABOUTYOURMINI.COM or refer to your Owner's Manual.



GETTING OUT.

It has to happen eventually, even to the most dedicated of motoring MINI Owners. To unlock your doors, you can just flip the toggle switch in the center switch stack or pull twice on the door handle. The first pull unlocks the door. The second pull opens the door.

MINIUSA.COM

To see an actual demonstration of these and other MINI features, visit ABOUTYOURMINI.COM

