

THE IDIOSYNCRASIES OF YOUR NEW MINI HARDTOP.

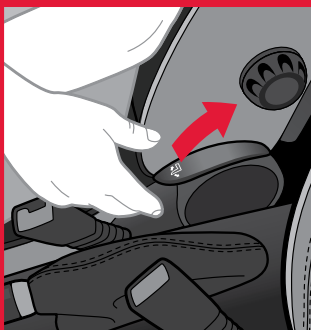
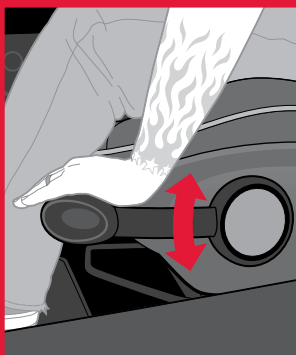


GET READY TO START YOUR ENGINE.

To start your car, insert the key fob in the slot and put your foot on the clutch (if you have a manual transmission) or the brake (if you have an automatic). Just like you would turn the key in other cars, give the start/stop button a single push and the engine will turn over. You're now ready and set to motor.

SEAT HEIGHT ADJUSTMENT.

Adjust the seat height by pumping the lever up or down like a ratchet. Be sure not to use this lever when trying to slide the seat forward. There's a separate bar for that, located under the front of the seat.

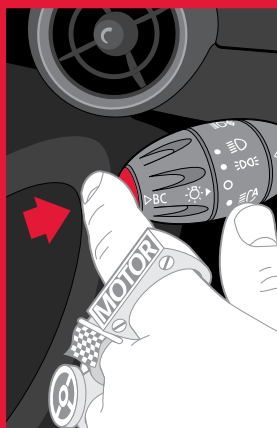


SEATBACK ADJUSTMENT.

Adjusting your seatback is easy. You just need to know where to look. Simply lift up the center arm rest, if your car is so equipped, and then lift the lever on the inboard side. This lever will unlock your seatback, allowing you to recline or sit up as you wish. Releasing the lever will lock it back into place.

YOUR SEAT HAS A MEMORY.

Pull the release lever found on the upper-rear back rest, and the entire front seat moves forward. To return the front seatback to its original position, simply slide it back on its track first and then push the top of the seatback until it locks in place. Once you master the technique, it will work wonders to keep your seat just the way you want it.

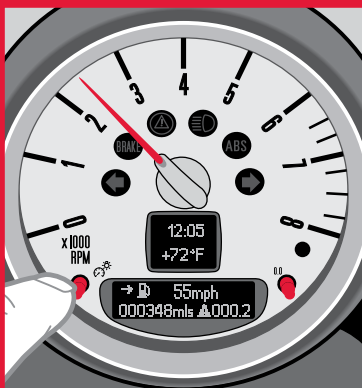


TACHOMETER CONTROL.

You'll notice two adjustment buttons on your tachometer: one that controls the instrument lights and another that resets the trip odometer. Press and hold the luminosity button on the left to brighten the instrument lights. Press and release repeatedly to dim the dash lights to suit your mood. Tap the other button on the right and the trip odometer resets.

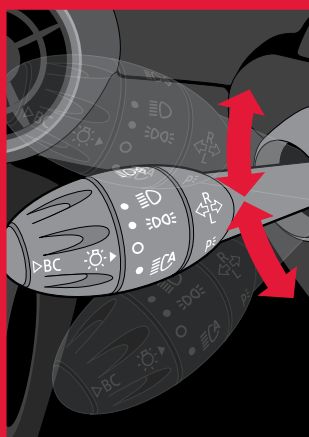
THERE'S NO SUCH THING AS "TOO YOU."

With over 150 trillion possible MINI configurations, it's unlikely you'll meet your clone. Set your personal profile and increase the odds. Begin setting any preference by putting the key fob in the dash and hitting the start/stop button once without your foot on the clutch or brake (so the car won't start). This activates radio readiness. You can now customize features such as how many times the turn-signal indicator flashes in lane-changing maneuvers, daytime-running lights, pathway lighting and the way your car locks. Consult your Owner's Manual for more details.



TAKING YOUR TURN.

You'll want to take turns often in a MINI, so getting acquainted with your signaling equipment is a must. For a lane change, push down or lift up the turn-signal stalk to the point of resistance and the signal will blink briefly. Flip the turn-signal stalk past the point of resistance to indicate a left or right turn. The turn-signal stalk will immediately go back to its starting position, but no need to worry, the turn signals will continue to blink through the entire turn. To interrupt the continued blinking, just push the turn-signal stalk in the same direction until the point of resistance. Your windshield wipers work in a similar way. See the Owner's Manual for details.

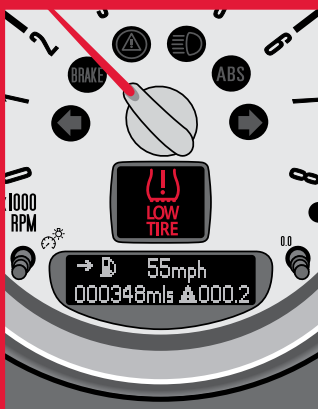
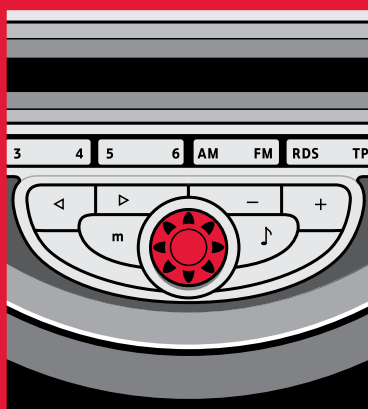


VOLUME CONTROL.

You'll find the knob that controls the stereo's decibel levels just below the CD player rather than in the radio face itself. You may choose to share this very important information at your discretion.

THE OTHER KNOB.

Now that you've located the volume-control knob, you may be curious about the other knob located on your car's radio face. Turn this knob to easily change your radio presets without having to hit the preset buttons themselves. You can also use this knob to access the on-board computer readouts. Hit the menu button and select "BC" to rotate through them easily.

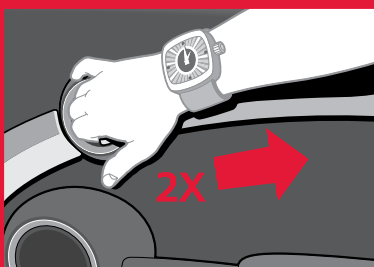
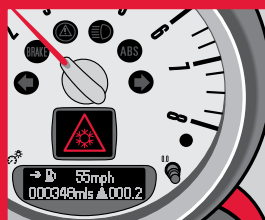


TIRE PRESSURE MONITOR (TPM).

If the pressure in your tires happens to get low, the tire pressure monitor will turn on, telling you so. Just bring the car to a stop, make sure your tires are OK and refill as necessary according to the pressure label in the door well. No biggie. For further details on the TPM functions, check out the demonstration video on ABOUTYOURMINI.COM or refer to your Owner's Manual.

ICY WARNING.

When the temperature drops to 37 degrees Fahrenheit, a snowflake flashes on the tachometer and a tone sounds. This is simply a warning that the roads might become slick or icy since the weather is near freezing. Be careful out there!



GETTING OUT.

It has to happen eventually, even to the most dedicated of motoring MINI Owners. You can unlock your door by flipping the toggle switch in the center stack, which unlocks both doors and the tailgate. Or you can just pull twice on the door handle—the first pull unlocks the door, the second pull opens the door.

MINIUSA.COM

To see an actual demonstration of these and other MINI features, visit ABOUTYOURMINI.COM



© 2009 MINI, a division of BMW of North America, LLC. The MINI name, model names and logo are registered trademarks. Printed in the USA. 05/09 29.6M R56



Paper: 100% recyclable, made with 100% recycled and de-inked content, processed chlorine-free. Paper designated Ancient Forest Friendly.™ Paper manufactured with electricity that is offset with Green-e® certified renewable-energy certificates. All inks used in the printing of this card are soy-based inks. However, please refrain from trying to make a latte with them. We already tried it. It doesn't work.